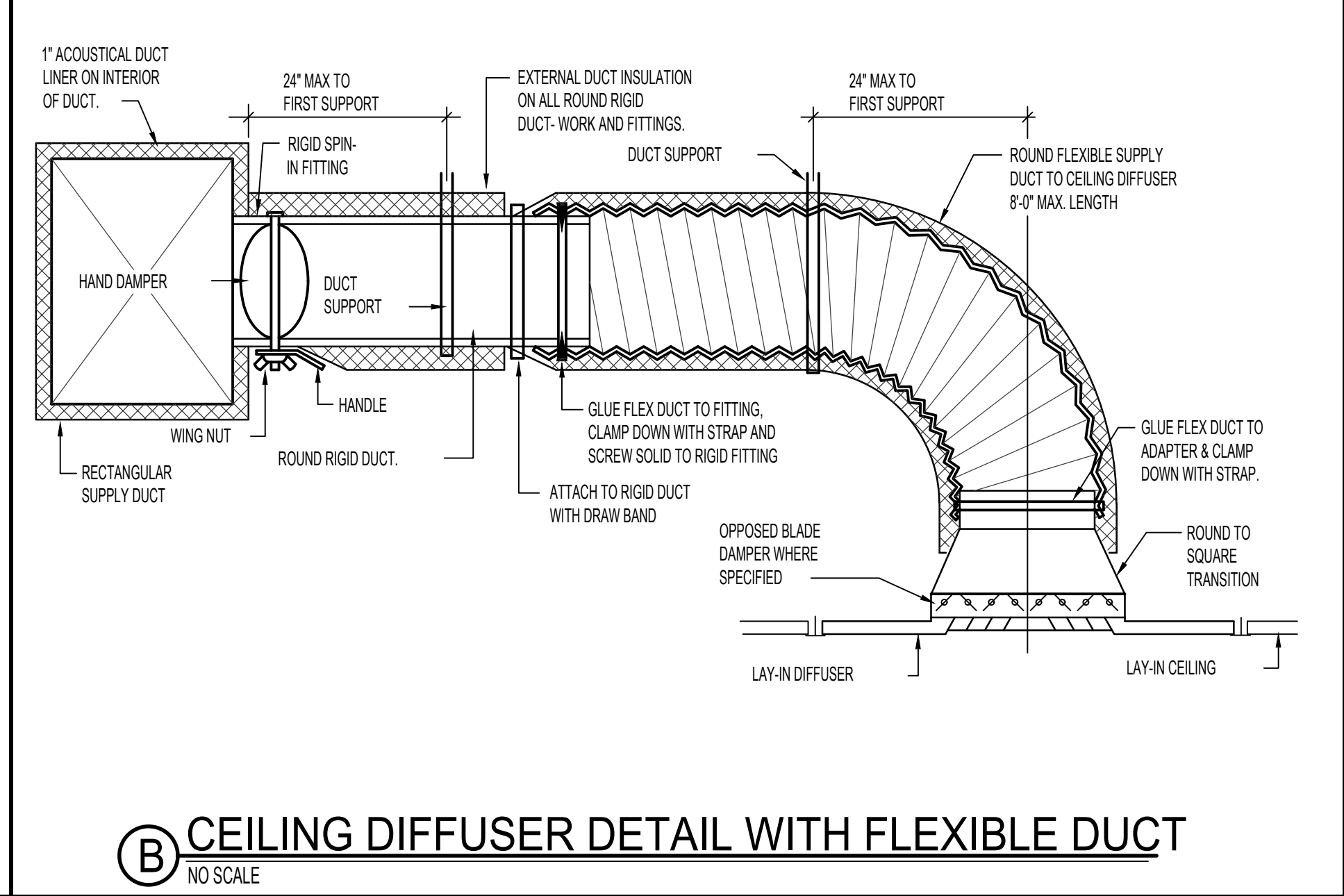
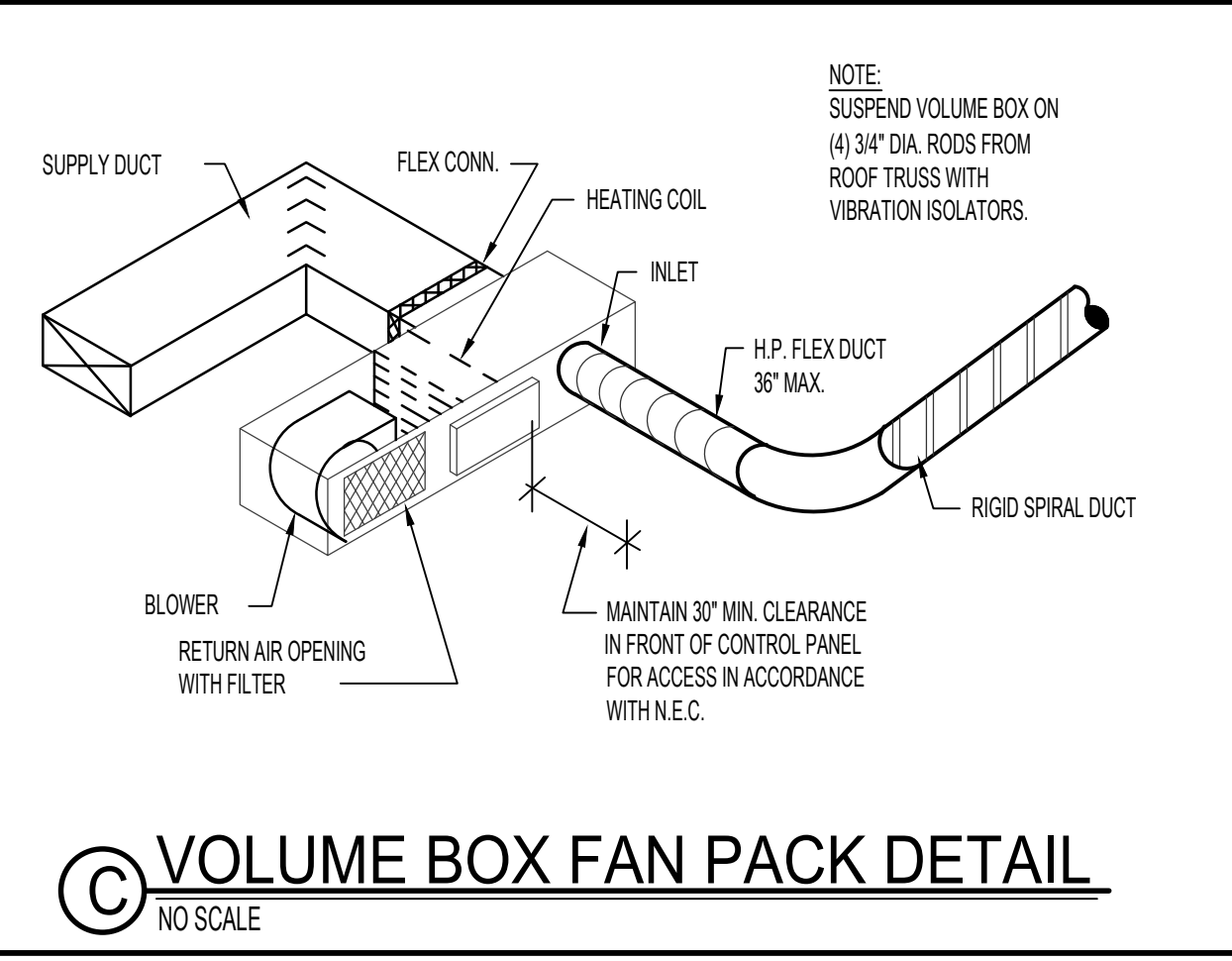


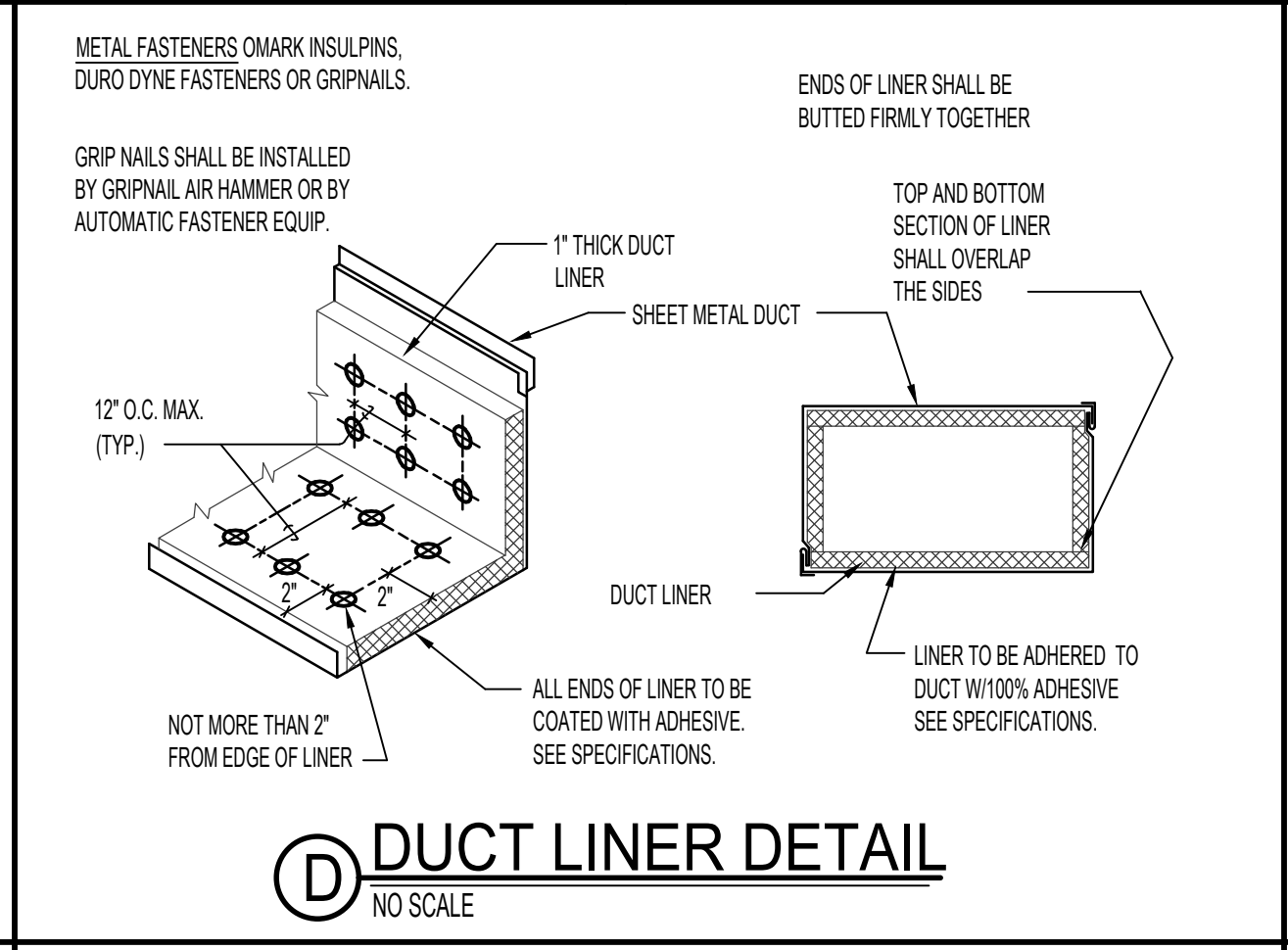
A DUCT STRAP HANGER DETAIL
NO SCALE



B CEILING DIFFUSER DETAIL WITH FLEXIBLE DUCT
NO SCALE



C VOLUME BOX FAN PACK DETAIL
NO SCALE

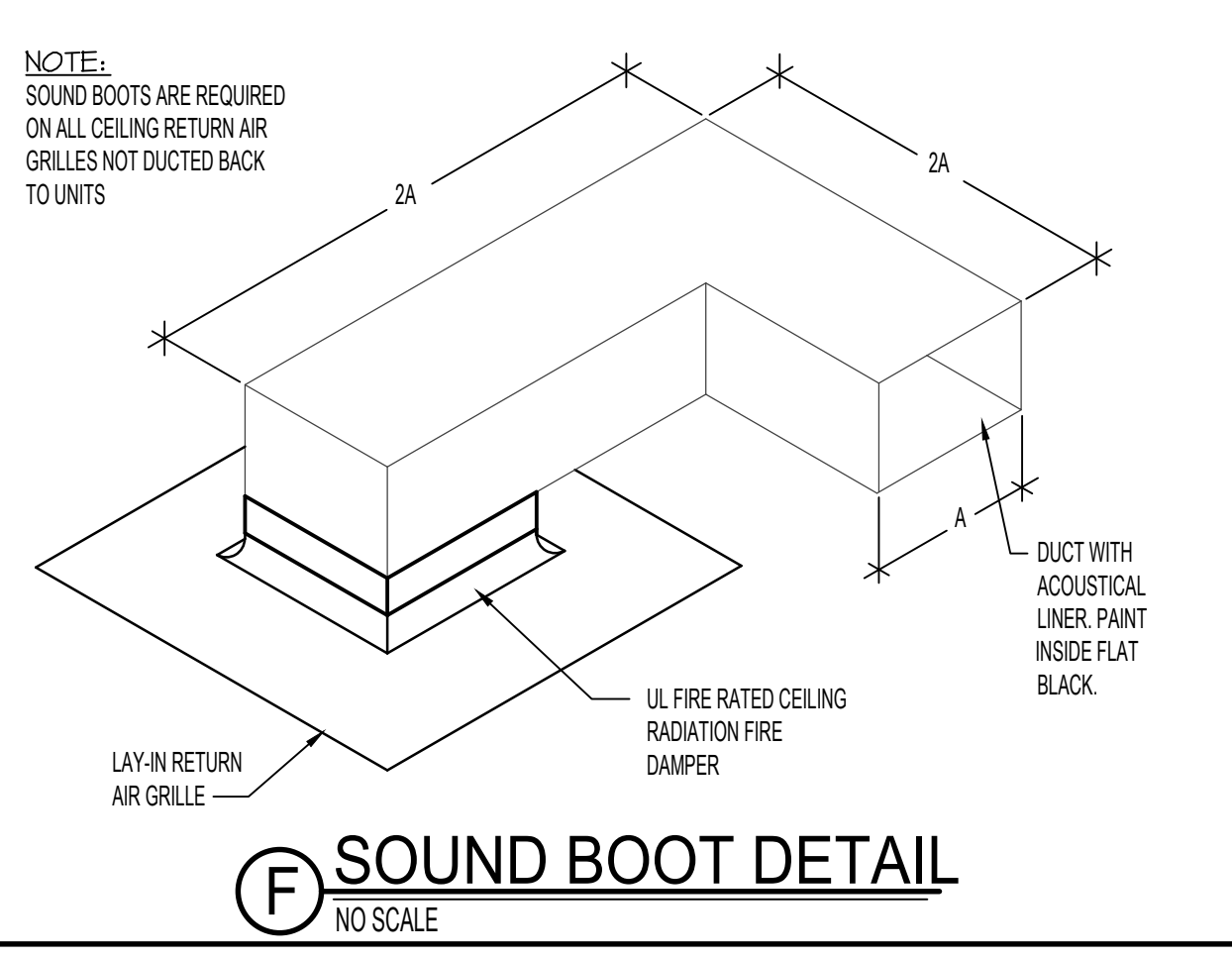


D DUCT LINER DETAIL
NO SCALE

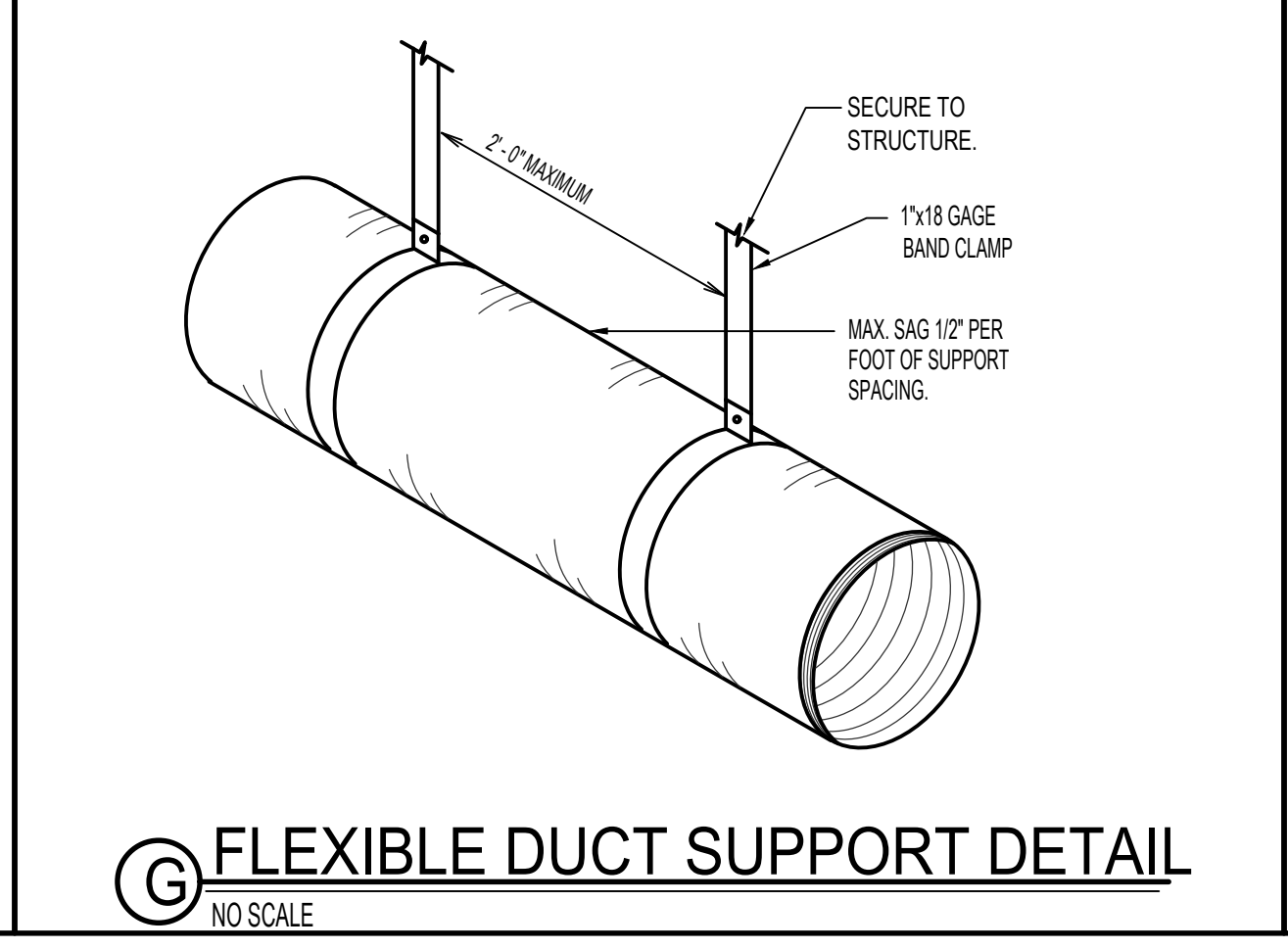
DIMENSION OF LONGEST SIDE INCHES	SHEET METAL GAUGE (ALL FOUR SIDES)	MINIMUM REINFORCING ANGLE SIZE AND MAXIMUM LONGITUDINAL SPACING BETWEEN TRANSVERSE JOINTS & OR INTERMEDIATE REINFORCING	TRANSVERSE REINFORCING (1)				
			AT JOINTS				
			MIN. H. IN.	DRIVE SLIP	HEMMED S SLIP	ALTERNATE BAR SLIP	REINFORCED BAR SLIP
UP THRU 12	26	NONE REQUIRED	1	26	26	24	24
13-18	24	NONE REQUIRED	1	24	24	24	24
19-30	24	1"x1"x18" @ 60 IN	1	-	24	24	24
31-42	22	1"x1"x18" @ 60 IN	1	-	-	22	22

(1) TRANSVERSE REINFORCING SIZE IS DETERMINED BY DIMENSION OF SIDE TO WHICH ANGLE IS APPLIED.

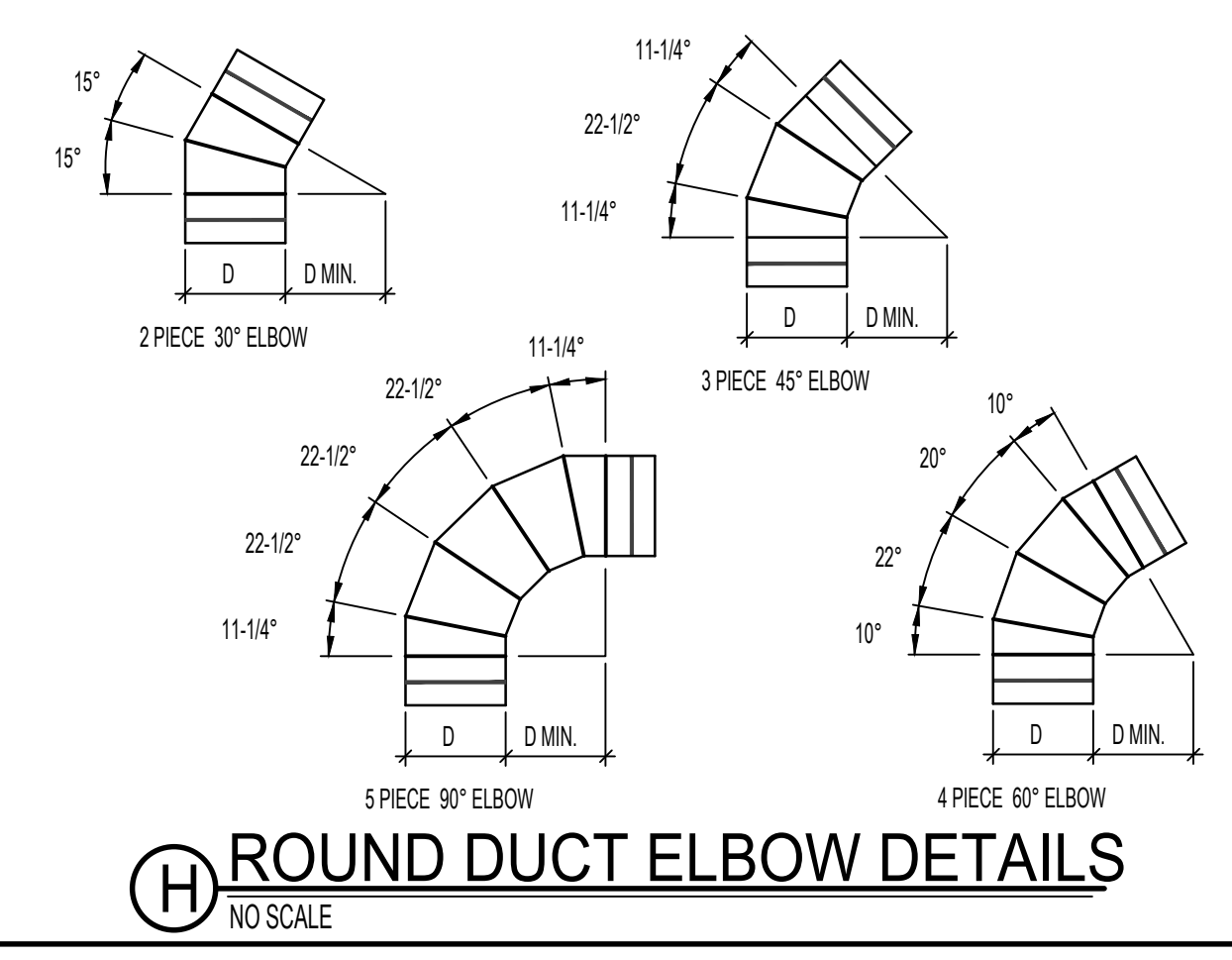
E DUCT CONSTRUCTION DETAIL
NO SCALE



F SOUND BOOT DETAIL
NO SCALE



G FLEXIBLE DUCT SUPPORT DETAIL
NO SCALE



H ROUND DUCT ELBOW DETAILS
NO SCALE

SYM.	TYPE	MIN. CFM	CLG CFM	HTG CFM	AIR INLET	AIR OUTLET	HEATING COIL			CHAR	CONTROL	REMARKS	
							KW	STEPS	TR				
VB 1	FAN PACK WITH RE-HEAT	100	300	300	6"0	10x6	3.0	2	65°F	32°F	480603	ELECTRONIC	TRANE MODEL VSEF05 FAN PACK WITH SENSOR AND ELECT. COIL
VB 2	FAN PACK WITH RE-HEAT	180	400	320	6"0	12x6	2.0	1	65°F	20°F	480603	ELECTRONIC	TRANE MODEL VCEF06 FAN PACK WITH SENSOR AND ELECT. COIL
VB 3	FAN PACK WITH RE-HEAT	180	450	320	6"0	12x6	2.0	1	65°F	20°F	480603	ELECTRONIC	TRANE MODEL VCEF06 FAN PACK WITH SENSOR AND ELECT. COIL
VB 4	FAN PACK WITH RE-HEAT	180	450	320	6"0	12x6	2.0	1	65°F	20°F	480603	ELECTRONIC	TRANE MODEL VCEF06 FAN PACK WITH SENSOR AND ELECT. COIL
VB 5	FAN PACK WITH RE-HEAT	180	450	320	6"0	12x6	2.0	1	65°F	20°F	480603	ELECTRONIC	TRANE MODEL VCEF06 FAN PACK WITH SENSOR AND ELECT. COIL

SYM.	TYPE	SIZE	CFM RANGE	THROW PATTERN	CONSTR.	FINISH	FIRE DAMPER	REMARKS
CD-1 CFM	CEILING	12x12	150-300	⬇	STEEL	WHITE	NA	PRICE MODEL SMD IN 24x24 LAY-IN
CD-2 CFM	CEILING	9x9	150-250	⬇	STEEL	WHITE	NA	PRICE MODEL SMD IN 24x24 LAY-IN
CD-3 CFM	CEILING	15x15	450	⬇	STEEL	WHITE	NA	PRICE MODEL SMD IN 24x24 LAY-IN
CD-4 CFM	CEILING	6x6	50-125	⬇	STEEL	WHITE	NA	PRICE MODEL SMD IN 24x24 LAY-IN
EG-1 CFM	CEILING	8x8	50	NA	STEEL	WHITE	NA	PRICE MODEL S35 IN 24x24 LAY-IN
RG-1	CEILING	10x10	150-350	NA	STEEL	WHITE	NA	PRICE MODEL S35 IN 24x24 LAY-IN
RG-2	CEILING	12x12	300-450	NA	STEEL	WHITE	NA	PRICE MODEL S35 IN 24x24 LAY-IN
RG-3	CEILING	16x16	450-700	NA	STEEL	WHITE	NA	PRICE MODEL S35 IN 24x24 LAY-IN

\\esa-local-f-drive\21163 PMIC ORTHO CLINIC OFFICES\21163 PMIC Ortho Clinic Offices M1.Dwg Sep 02, 2022 - 3:02pm

Engineered Systems Associates
 1355 EAST CENTER
 POCATELLO, IDAHO 83201
 PHONE: (208) 233-0501
 FAX: (208) 233-0529
 EMAIL: esa@engsystems.com
 ESA JOB NUMBER: 21163

ORTHOPEDIC CLINIC OFFICE REMODEL
 PORTNEUF MEDICAL CENTER
 777 HOSPITAL WAY, POCATELLO, IDAHO

MECHANICAL DETAILS AND SCHEDULES

REVISIONS: _____
 DATE: SEP 2022
 DRAWING NO. **M2.1**
 JOB NO. 2209
 2 OF 2

COPYRIGHT 2022
 JENSEN HAYES SHROPSHIRE ARCHITECTS, P.A.
 125 NORTH GARFIELD
 POCATELLO, IDAHO 83204
 (208) 232-1223

JH S
 JENSEN HAYES SHROPSHIRE ARCHITECTS, P.A.